

First Time with J6

Equipment required:

- Bean (Bean container)
- Water (Water Tank)
- Milk tube (connecting machine & milk container)

These short instructions do not replace the »J6 Instructions for Use«. Make sure you read and observe the safety information and warnings first in order to avoid hazards.

»Display«

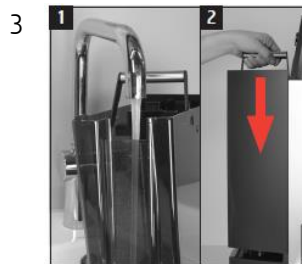
Water Hardness

1

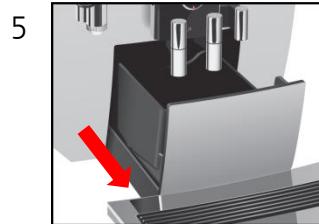
tauchen leicht ab- und nachlesen.
Dip briefly (1 sec), shake off excess water and compare after 1 min.
Plongez brièvement (1 sec), agouitez l'excès d'eau et comparez après 1 min.

reenvert	0	<3°dH	<3,75°w	<5,4°f
rouge	1	>3°dH	>3,75°w	>5,4°f
rouge	2	>6°dH	>6,75°w	>9,4°f
rouge	3	>10°dH	>10,75°w	>15,1°f
rouge	4	>14°dH	>17,5°w	>25,2°f

Filter Cartridge Activation



- »Filter operation/Saved«
- »Filter is being rinsed«
- » System is filling«
- »Empty drip tray«

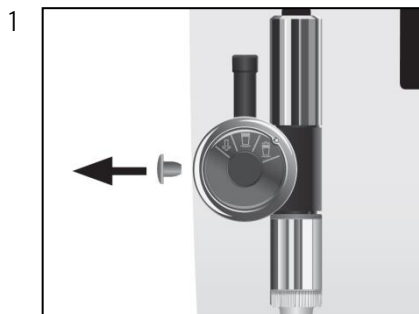


- »Machine is heating«
- »Machine is rinsing «



Connecting milk

Remove the protective cover



Attach the milk pipe

